

INSTALLATION INSTRUCTIONS



6" LED Slim Downlight

Warning

LED Lights should be installed by a certified electrician.
To prevent electrical shock, disconnect electrical supply before installation or service.

PRODUCT SPECIFICATION

Item No.	Lumens	Light Source	CCT	Input Voltage	Wattage	CRI	Finish	Size Φ mm	Dimmable
IB-002-2-12W-WH	1050lm	SMD2835	2700K	120V 60Hz	12W	≥ 80	WHITE	$\Phi 171$	Yes
IB-002-3-12W-WH			3000K						
IB-002-4-12W-WH			4000K						
IB-002-5-12W-WH			5000K						
IB-002-6-12W-WH			6000K						

INSTALLATION

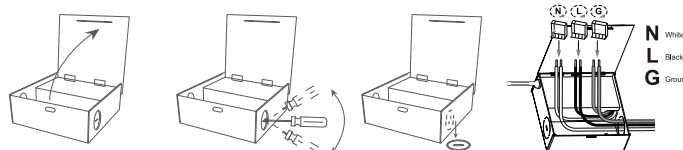
1.Tools to open the appropriate holes in the ceiling.



Find the circle template (for the hole size installation), use the circle template to measure the size of hole and then cut out holes.

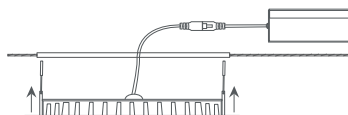
2.Connecting the AC power.

- Open the junction box.
- Use a suitable tool to remove one of the knockouts of the side plate.



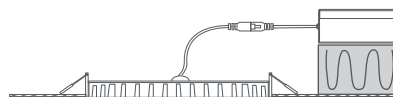
- Put wires through the knockout hole and connect the wires using the connector.

3.Holding the clips place the fixture into the installation hole.



Holding the clips place the fixture in the installation hole.

4.Release spring clips and push into place.



Release spring clips and guide the light fixture into place.

Warranty

Our 5 years warranty applies to manufacturing defects that affect the product which existed at the time of the purchase of the product, defects that are non-apparent and are unknown to the buyer. This warranty applies to the product only and does not cover the installation of the product.

* The warranty does not apply to material, economic and/or physical damages or losses caused by the product.

* This warranty will not apply to any damages and/or losses caused by an incorrect use, installation or maintenance of the product. (The manufacturer is therefore not responsible for damages to the product or material, economic and/or physical damages or losses caused by an incorrect use, installation or maintenance of the product.)

If the buyer suspects that the product is affected by a defect, the buyer should return the product to the point of purchase.

When emailing a description of the alleged problem, proof of purchase and a picture clearly illustrating the alleged defect are required to be attached to the claim email.

The buyer should also return the product to the point of purchase at his/her own expense. After product inspection, if the warranty applies, we will repair or replace the product free of charge.